

**Dothiepin Hcl Cas No. : 897-15-4**

Dothiepin is in the category of drugs referred to as tricyclic antidepressants. These are used to treat depression. When an individual experiences depression, the amount of noradrenaline and serotonin released by the brain is decreased.

Active Pharmaceuticals Ingredients Manufacturers



Taj Pharma PDF

# Taj Pharmaceuticals Ltd.

## Dothiepin Hcl

### CAS No. : 897-15-4



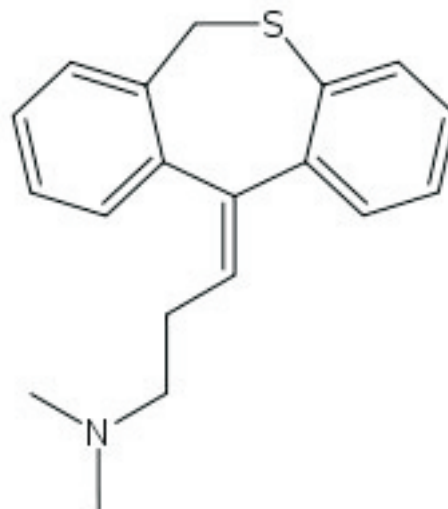
CAS number 897-15-4  
ATC code N06AA16  
PubChem 13473

**Chemical data**

Formula C<sub>19</sub>H<sub>21</sub>NS  
Mol. mass 331.9 g/mol

**Pharmacokinetic data**

Bioavailability 30%  
Metabolism Hepatic  
Half life 20 hours  
Excretion Renal  
Therapeutic considerations  
Pregnancy cat.

**DOSAGE**

Adults: Initially 75 mg/day in divided doses or as a single dose at night, increasing to 150 mg/day. In certain circumstances, e.g. in hospital use or unresponsive patients, dosages up to 300 mg daily have been used.

Suggested regimens: 25 or 50 mg three times daily or, alternatively, 75 or 150 mg as a single dose at night. Should the regimen of 150 mg as a single night-time dose be adopted, it is better to give a smaller dose for the first few days.

Elderly: 50 to 75 mg daily initially. As with any antidepressant, the initial dose should be increased with caution under close supervision. Half the normal adult dose may be sufficient to produce a satisfactory clinical response.

Children: Not recommended.

Take this medicine as directed. Do not stop taking this medicine abruptly without consulting with your doctor.

**SIDE EFFECTS**

There are many side effects that this medication can bring on. They can range from severe to less severe. The side effects that are less severe include: dizziness, dry mouth, constipation, feeling sleepy, and tiredness. The symptoms that might require immediate medical attention include: rash, blurred vision, high temperature, sore throat, yellowish eyes and skin, and changes in your heart beats.

The most common side-effects are drowsiness and dry mouth as well as dry eyes. Other less common side-effects may include:

- \* Constipation
- \* Abnormally large stools
- \* Blurred vision
- \* Tachycardia



**Taj Pharmaceuticals Ltd.**  
**Dothiepin Hcl**

CAS NO- 897-15-4

- \* Urinary retention
- \* tremors, especially of the hands
- \* Blood disorders
- \* Hypotension
- \* Sexual dysfunction
- \* Sweating
- \* Increased sensitivity to sunlight and increased vulnerability to sunburn

These side-effects cease when treatment ceases. Alcohol should be avoided whilst taking dosulepin as it may increase some side-effects.

Whilst dosulepin is not addictive, it should not be stopped suddenly as there is a risk of initial withdrawal symptoms which may be mistaken for some of the original indications for the drug:

- \* Nausea
- \* Vomiting
- \* Loss of appetite
- \* Headache
- \* Giddiness
- \* Chills
- \* Insomnia
- \* Anxiety

### PRECAUTIONS

If you are going to take this medication, you doctor needs to know if you have a history of thyroids, prostate issues, glaucoma, epilepsy, heart, kidney or liver problems. This drug is not recommended for children, or anyone who has recently suffered from a heart attack or irregular heart rhythms.

There are some drugs that can possibly interact with medications. If you are taking cimeidenie, warfarin, subutramine, and antihistamines, you need to advise your doctor first. You should also not take this drug if you are taking any MAO inhibitors, as this can also have a reaction.

If you are pregnant, planning on becoming pregnant, or breast-feeding, you need to inform your doctor immediately as this medication could have a negative reaction to your baby or unborn child. There is some evidence that suggests that if you take this drug while pregnant it increases the chance of your child being born with birth defects.

This medication can make you dizzy and drowsy so you should avoid driving a car or using machinery while on this medication. You should also avoid drinking alcohol while taking this medication as it can increase the depressant effects of the medication.

There is also some concern for individuals who suffer from epilepsy taking this drug. As at times this drug may lower an individual seizure onset, and cause them to go into shock or have convulsions. Again, only a doctor can decide which drug is best suited for the conditions that you are experiencing.



## DRUG DESCRIPTION

Dothiepin is used to treat depression. Dothiepin (Dothiepin Hydrochloride) is a tricyclic antidepressant which has anxiolytic properties.

Dothiepin is in the category of drugs referred to as tricyclic antidepressants. These are used to treat depression. When an individual experiences depression, the amount of norepinephrine and serotonin released by the brain is decreased. Dothiepin works by helping to block the return of these chemicals to the brain, allowing an individual to continue to feel up-lifted, instead of depressed. In some instances, Dothiepin is used as a painkiller to treat severe nerve pain.

Dosulepin is relatively mild and is used for low-level anxiety depression and similar disorders as well as the treatment of chronic and ongoing pain disorders, particularly where insomnia and/or loss of appetite are present. It can take between two and four weeks of regular usage to become effective; it is often started at a low level and the dosage increased if this is ineffective. The drug causes drowsiness as a side-effect, and this may be used as part of the treatment, since anxiety-depressive patients may have difficulty sleeping; it can also be combined with other drugs such as temazepam.



Note /Government Notification: These chemicals are designated as those that are used in the manufacture of the controlled substances and are important to the manufacture of the substances. For any (Control Substance) products Import and Export \*\*\* subjected to your country government laws /control substance ACT.

Information: The information on this web page is provided to help you to work safely, but it is intended to be an overview of hazards, not a replacement for a full Material Safety Data Sheet (MSDS). MSDS forms can be downloaded from the web sites of many chemical suppliers. Also that the information on the PTCL Safety web site, where this page was hosted, has been copied onto many other sites, often without permission. If you have any doubts about the veracity of the information that you are viewing, or have any queries, please check the URL that your web browser displays for this page. If the URL begins "www.tajapi.com/www/Denatonium Benzoate.htm/" the page is maintained by the Safety Officer in Physical Chemistry at Oxford University. If not, this page is a copy made by some other person and we have no responsibility for it.

The Controlled Substances Act (CSA) was enacted into law by the Congress of the United States as Title II of the Comprehensive Drug Abuse Prevention and Control Act of 1970.[1] The CSA is the federal U.S. drug policy under which the manufacture, importation, possession, use and distribution of certain substances is regulated. The Act also served as the national implementing legislation for the Single Convention on Narcotic Drugs

This document plus the full buyer/ prescribing information, prepared for health professionals can be found at:

<http://www.tajapi.com>

or by contacting the sponsor, Taj Pharmaceuticals Limited., at:  
91 022 30601000.

This leaflet was prepared by  
Taj Pharmaceuticals Limited,  
Mumbai (India).

MPSTJ278

Last revised: 29 August 2009