

Risperidone Cas No. : 106266-06-2

Risperidone is used to treat certain mental/mood disorders. This medication can help you to think clearly and function in daily life. This is a psychiatric medication that works by helping to restore the balance of certain natural substances in the brain. This section contains uses of this drug that are not listed in the approved professional labeling for the drug but that may be prescribed by your health care professional.

Active Pharmaceuticals Ingredients Manufacturers

Taj Pharmaceuticals Ltd.**Risperidone****CAS No. : 106266-06-2****Systematic (IUPAC) name**

4-[2-[4-(6-fluorobenzo[d]isoxazol-3-yl)-1-piperidyl]ethyl]-3-methyl-2,6-diazabicyclo[4.4.0]deca-1,3-dien-5-one

Identifiers

CAS number 106266-06-2

ATC code N05AX08

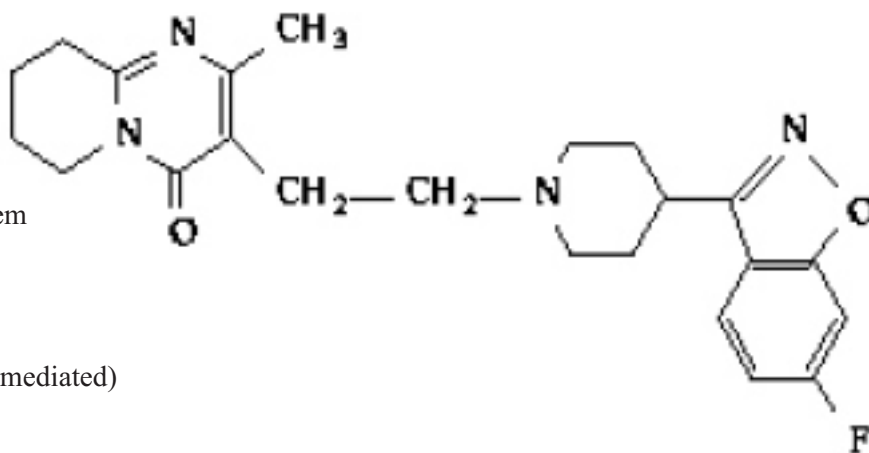
PubChem 5073

DrugBank APRD00187

Chemical dataFormula C₂₃H₂₇FN₄O₂

Mol. mass 410.485 g/mol

SMILES eMolecules & PubChem

**Pharmacokinetic data**

Bioavailability 70% (oral)

Metabolism Hepatic (CYP2D6-mediated)

Half life 3–20 hours

Excretion Urinary

Therapeutic considerations

Pregnancy cat. C

Legal status Prescription only

Routes Oral and extended-release intramuscular injection

Risperidone is an atypical antipsychotic used to treat adolescent schizophrenia, the mixed and manic states associated with bipolar disorder, and irritability in children with autism.

Risperidone, a psychotropic agent belonging to the chemical class of benzisoxazole derivatives. The chemical designation is 3-[2-[4-(6-fluoro-1,2-benzisoxazol-3-yl)-1-piperidyl]ethyl]-6,7,8,9-tetrahydro-2-methyl-4H-pyrido [1,2-a]pyrimidin-4-one. Its molecular formula is C₂₃H₂₇FN₄O₂ and its molecular weight is 410.49. Risperidone is a white to slightly beige powder. It is practically insoluble in water, freely soluble in methylene chloride, and soluble in methanol and 0.1 N HCl.

Risperidone Tablets are available in 0.25 mg, 0.5 mg, 1 mg (white), 2 mg, 3 mg, and 4 mg (green) strengths. Risperidone tablets contain the following inactive ingredients: colloidal silicon dioxide, hypromellose, lactose, magnesium stearate, microcrystalline cellulose, propylene glycol, sodium lauryl sulfate, corn.

The 0.25 mg, 0.5 mg, 2 mg, 3 mg, and 4 mg tablets also contain talc and titanium dioxide. The 0.25 mg tablets contain yellow iron oxide; the 0.5 mg tablets contain red iron oxide.

Risperidone is also available as a 1 mg/mL oral solution. Risperidone Oral Solution contains the following inactive ingredients: tartaric acid, benzoic acid, sodium hydroxide, and purified water.



Taj Pharmaceuticals Ltd.
Risperidone

CAS No 106266-06-2



Uses

Risperidone is used to treat certain mental/mood disorders. This medication can help you to think clearly and function in daily life. This is a psychiatric medication that works by helping to restore the balance of certain natural substances in the brain.

This section contains uses of this drug that are not listed in the approved professional labeling for the drug but that may be prescribed by your health care professional. Use this drug for a condition that is listed in this section only if it has been so prescribed by your health care professional.

How to use

Take this medicine by mouth with a glass of water. Follow the directions on the prescription label. You can take it with or without food. If it upsets your stomach, take it with food. Take your medicine at regular intervals. Do not take it more often than directed. Do not stop taking except on your doctor's advice.

The dosage is based on your medical condition and response to therapy. Continue to take this medication as directed, even if you are feeling better and thinking more clearly. Use this medication regularly in order to get the most benefit from it. Remember to use it at the same time each day.

Side Effects

Dizziness, drowsiness, fatigue, nausea, constipation, runny nose, increased appetite, weight gain, nervousness, acne, dry skin, difficulty concentrating, decreased sexual ability/desire or difficulty sleeping may occur. If any of these effects persist or worsen, contact your doctor.

This medication may in rare instances increase your blood level of a certain hormone. In females, an increase in prolactin levels may result in unwanted breast milk, the end of menstruation or difficulty becoming pregnant. In males, it may result in decreased sexual ability, inability to produce sperm, or enlarged breasts. If you develop any of these symptoms, tell your doctor immediately.

Precautions

Before taking risperidone, tell your doctor, if you are allergic to it; or if you have any other allergies.

Risperidone can cause an increase in blood sugar levels and can increase the risk of developing diabetes. Tell your healthcare provider if you develop signs of diabetes while taking risperidone. Possible signs of diabetes can include increased thirst, increased urination, or hunger.

If you have diabetes, your blood sugar should be monitored carefully and regularly during treatment with risperidone to make sure your diabetes is not becoming more severe.

Do not stop taking this medicine without first checking with your doctor. Your doctor may want you to reduce gradually the amount you are taking before stopping completely. This is to prevent side effects and to keep your condition from becoming worse.

MISSED DOSE

If you miss a dose, take it as soon as remembered; do not take it if it is near the time for the next dose, instead, skip the missed dose and resume your usual dosing schedule. Do not "double-up" the dose to catch up.



STORAGE: Store this medicine at room temperature away from light and moisture. Per the U.S. manufacturer, store the US product between 59 and 77 degrees F (15-25 degrees C).

Do not store in the bathroom. Keep all medicines away from children and pets.

DOSAGE

The dose of Risperidone will be started gradually over the first days of treatment. Your doctor will probably recommend the following dosage to start with:

Day 1: 2mg (as a single dose or as 1 mg in the morning and 1 mg in the evening);

Day 2: 4mg (as a single dose or as 2mg in the morning and 2mg in the evening).

However, if you have not used Risperidone before, your doctor may recommend a more gradual increase.

The dosage will then be set to suit your needs but will normally be 4mg to 6mg a day, either as a single dose or split into two doses, one to be taken in the morning and one to be taken in the evening. Some patients may require less than 4mg for a good effect.

Important:

Never take more than a total of 16mg per day.

Take this medication by mouth exactly as prescribed. This drug may be taken with or without food. During the first few days your doctor may gradually increase your dose to allow your body to adjust to the medication.

If you are using the liquid form of this medication, measure your dose with a special measuring spoon or device. Do not use a household spoon because it may not provide the correct dose.

The dosage is based on your medical condition and response to therapy. Continue to take this medication as directed, even if you are feeling better and thinking more clearly.

Note /Government Notification: These chemicals are designated as those that are used in the manufacture of the controlled substances and are important to the manufacture of the substances. For any (Control Substance) products Import and Export *** subjected to your country government laws /control substance ACT.

Information: The information on this web page is provided to help you to work safely, but it is intended to be an overview of hazards, not a replacement for a full Material Safety Data Sheet (MSDS). MSDS forms can be downloaded from the web sites of many chemical suppliers. Also that the information on the PTCL Safety web site, where this page was hosted, has been copied onto many other sites, often without permission. If you have any doubts about the veracity of the information that you are viewing, or have any queries, please check the URL that your web browser displays for this page. If the URL begins "www.tajapi.com/www/Denatonium Benzoate.htm/" the page is maintained by the Safety Officer in Physical Chemistry at Oxford University. If not, this page is a copy made by some other person and we have no responsibility for it.

The Controlled Substances Act (CSA) was enacted into law by the Congress of the United States as Title II of the Comprehensive Drug Abuse Prevention and Control Act of 1970.[1] The CSA is the federal U.S. drug policy under which the manufacture, importation, possession, use and distribution of certain substances is regulated. The Act also served as the national implementing legislation for the Single Convention on Narcotic Drugs

This document plus the full buyer/ prescribing information, prepared for health professionals can be found at:

<http://www.tajapi.com>

or by contacting the sponsor, Taj Pharmaceuticals Limited., at:
91 022 30601000.

This leaflet was prepared by
Taj Pharmaceuticals Limited,
Mumbai (India).
MPSTJ278

Last revised: 29 August 2009

