

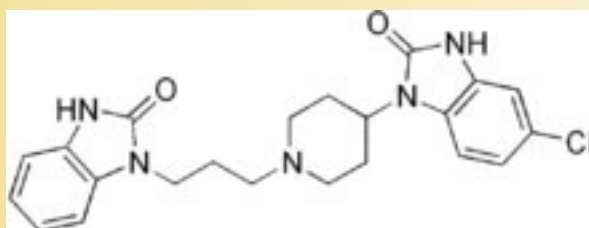
## Domperidone Base (Cas No 57808-66-9)



Domperidone Base

Cas No. :57808-66-9

Structure



Identifiers

CAS number 57808-66-9

ATC code A03FA03

PubChem 3151

DrugBank APRD00418

ChemSpider 3039

Chemical data

Formula C<sub>22</sub>H<sub>24</sub>ClN<sub>5</sub>O<sub>2</sub> Mol. weight 425.911 g/mol

SMILES eMolecules & PubChem

Pharmacokinetic data

Bioavailability High

Protein binding 91–93%

Metabolism Hepatic and intestinal (first-pass)

Half life 7 hours

Excretion Breast milk, renal

Therapeutic considerations

Pregnancy cat. Not classified Routes Oral, intravenous, rectal

Drug Description

Domperidone is an antidopaminergic drug, and used orally, rectally or intravenously, generally to suppress nausea and vomiting. It has also been used to stimulate lactation.

Doctor. Domperidone passes into breast milk. Due to the potential risks to a nursing infant, breast-feeding while using this drug is not recommended. Consult your doctor before breast-feeding

## Domperidone Base (Cas No 57808-66-9)

### Uses

#### Gastrointestinal problems

Domperidone is used, together with metoclopramide, cyclizine, and 5HT<sub>3</sub> receptor antagonists (such as granisetron) in the treatment of nausea and vomiting.

Domperidone has also been found effective in the treatment of gastroparesis, a stomach motility condition, and for paediatric Gastroesophageal reflux (infant vomiting).

#### Parkinson's disease

It has been used in patients with Parkinson's disease.

Unlike metoclopramide, domperidone does not cross the blood-brain barrier.

#### Lactation

The hormone prolactin stimulates lactation in humans, and its release is inhibited by the dopamine secreted by the hypothalamus. Domperidone, by acting as an anti-dopaminergic, results in increased prolactin secretion, and thus promotes lactation.

Since, according to the American FDA, domperidone is not approved for enhanced lactation in any country, it is sometimes self-prescribed from original research or prescribed "off-label" for this use in countries around the world.

#### Anti-emetic

There is some evidence that domperidone has antiemetic activity.

Domperidone is a first choice anti-emetic in most countries, [citation needed] together with metoclopramide. It is however not approved for prescription in the US. Although it has never been officially approved for use in the United States, domperidone is sometimes purchased from pharmacies in other countries for this purpose.

### SIDE EFFECTS

Headache, dizziness, dry mouth, nervousness, flushing, or irritability may occur the first several days as your body adjusts to the medication. Trouble sleeping, stomach cramps, hot flashes and leg cramps have also been reported. If any of these effects continue or become bothersome, inform your doctor. Notify your doctor immediately if you develop: chest pain, slow/fast/irregular heartbeat, swelling of the feet or ankles, difficulty urinating, swelling of the breasts or discharge from the nipple in men or women, menstrual changes, sexual difficulties. If you notice other effects not listed above, contact your doctor or pharmacist.

### PRECAUTIONS

Tell your doctor your medical history, especially of: history of breast cancer, allergies. Limit your intake of alcoholic beverages. This medication should be used only if clearly needed during pregnancy. Discuss the risks and benefits with your