

## Pantoprazole (Cas No 102625-70-7)



Pantoprazole

CAS number 102625-70-7

Systematic (IUPAC) name

6-(difluoromethoxy)-2-[(3,4-dimethoxypyridin-2-yl)methylsulfinyl]-1H-benzo[d]imidazole

Identifiers

CAS number 102625-70-7

ATC code A02BC02

PubChem 4679

DrugBank APRD00073

ChemSpider 4517

Chemical data

Formula C<sub>16</sub>H<sub>15</sub>F<sub>2</sub>N<sub>3</sub>O<sub>4</sub>S Mol. mass 383.371 g/mol

SMILES eMolecules & PubChem

Pharmacokinetic data

Bioavailability 77%

Metabolism Hepatic (CYP2C19 and 3A4)

Half life 1 hour

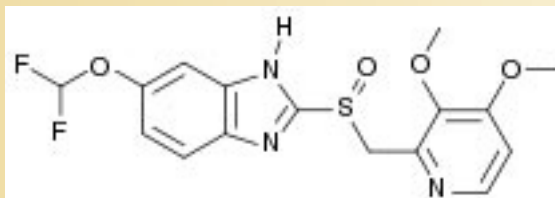
Excretion Renal

Therapeutic considerations

Pregnancy cat. B3(AU) B(US)

Legal status Prescription only

Routes Oral and intravenous



Pantoprazole is a proton pump inhibitor drug used for short-term treatment of erosion and ulceration of the esophagus caused by gastroesophageal reflux disease. Initial treatment is generally of eight weeks' duration, after which another eight week course of treatment may be considered if necessary. It can be used as a maintenance therapy for long term use after initial response is obtained. This medication may affect the results of certain lab tests, such as drug screenings (pantoprazole can cause a false positive for THC). It is recommended you make sure laboratory personnel and your doctor know you are using this drug. The active ingredient in (pantoprazole sodium) Delayed-Release Tablets is a substituted benzimidazole, sodium 5-(difluoromethoxy)-2-[[[(3,4-dimethoxy-2-pyridinyl)methyl] sulfinyl]-1 H -benzimidazole sesquihydrate, a compound that inhibits gastric acid secretion.