

Terlipressin (Cas No 14636-12-5)



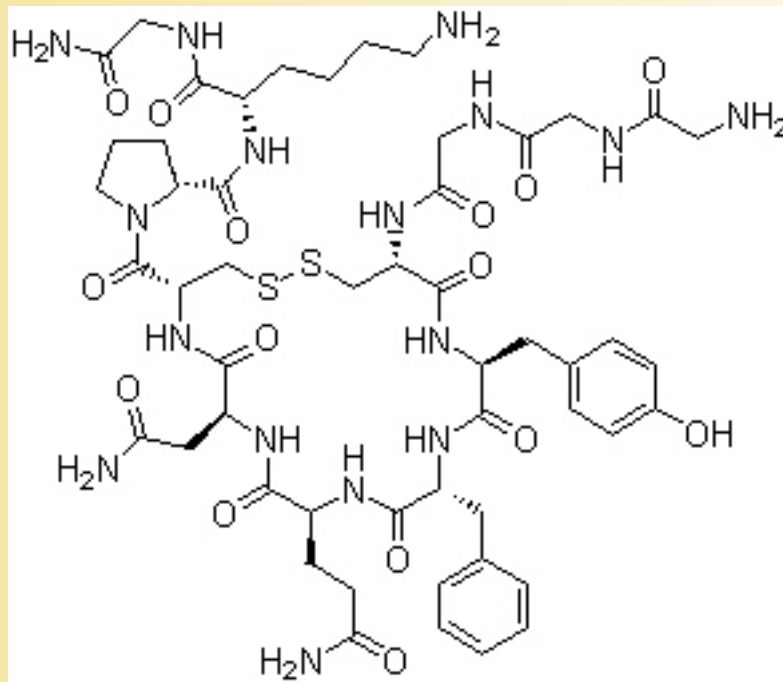
Molecular Structure

Terlipressin

Molecular Formula C₅₂H₇₄N₁₆O₁₅S₂

Molecular Weight 1227.37

CAS Registry Number 14636-12-5



N-(N-(N-Glycylglycyl)glycyl)-8-L-lysinevasopressin; (2S)-1-[(4S,7S,10S,13S,16S,19S)-19-[[2-[[2-[(2-Aminoacetyl)amino]acetyl]amino]acetyl]amino]-13-benzyl-10-(2-carbamoylethyl)-7-(carbamoylmethyl)-16-[(4-hydroxyphenyl)methyl]-6,9,12,15,18-pentaoxo-1,2-dithia-5,8,11,14,17-pentazacycloicosane-4-carbonyl]-N-[(1S)-5-amino-1-(carbamoylmethylcarbamoyl)pentyl]pyrrolidine-2-carboxamide