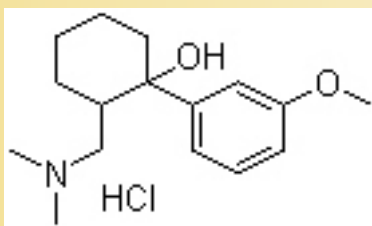


## Tramadol Hcl (Cas No 22204-88-2)



Molecular Structure



Tramadol Hcl

Molecular Formula C<sub>16</sub>H<sub>25</sub>NO<sub>2</sub>.HCl;C<sub>16</sub>H<sub>26</sub>ClNO<sub>2</sub>

Molecular Weight 299.84

CAS Registry Number 22204-88-2

Pharmacokinetic data

Bioavailability 68–72% Increases with repeated dosing.

Protein binding 20%

Metabolism Hepatic demethylation and glucuronidation

Half life 5–7 hours

Excretion Renal